

ε.sylwall



ε.sydock



ε.syltwin



# ε.sylbox

ACCESSORIES & KIT

E.SY WALL



E.SY DOCK

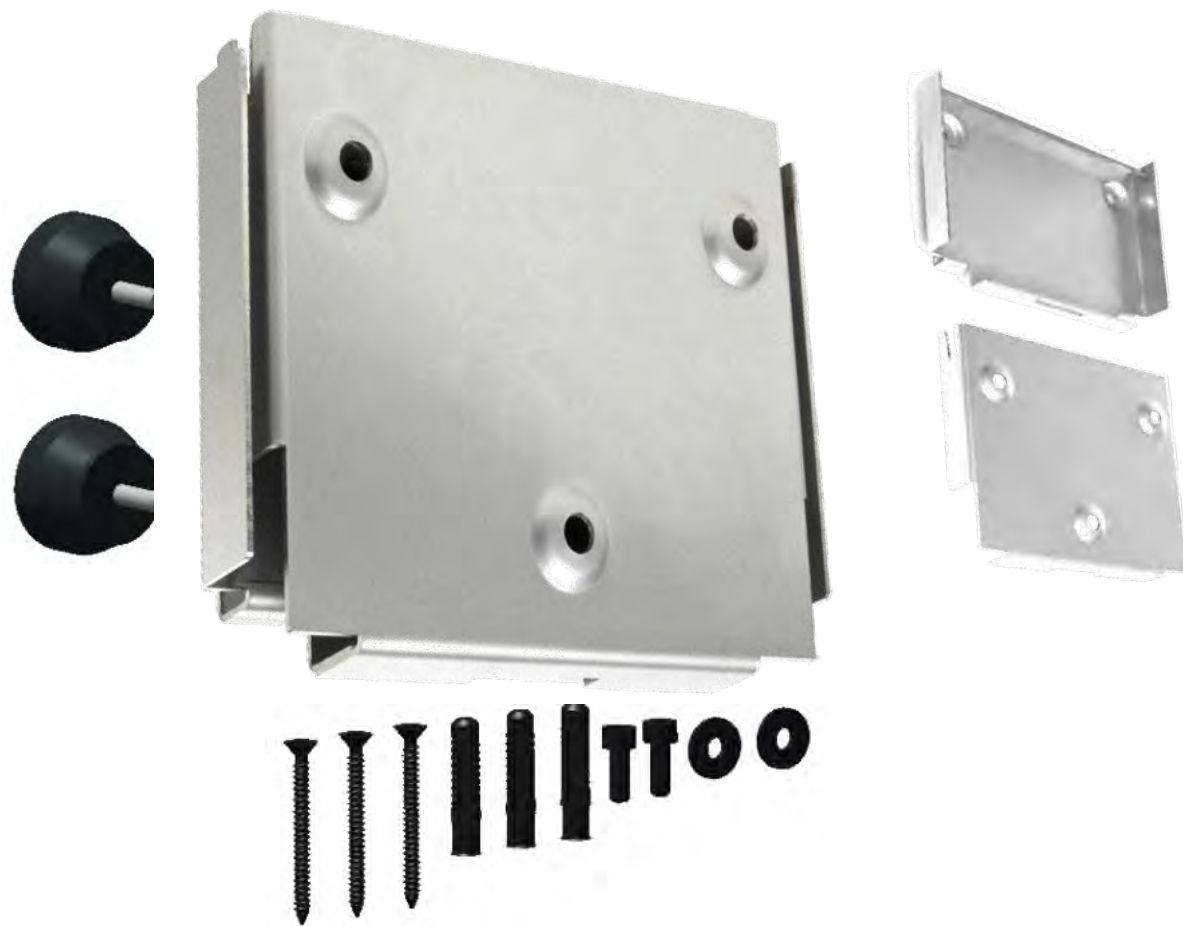


E.SY TWIN



## *E.SYWALL – BRACKET FOR WALL INSTALLATION*

# E.SYWALL



## E.SYWALL — BRACKET FOR WALL INSTALLATION



Installation of e.sybox can be hung on the wall with the DAB accessory kit e.sywall.

### **Advantages:**

- Saving space on the ground
- Possibility to simultaneously connecting 2 different deliveries in vertical position

## e.sydock





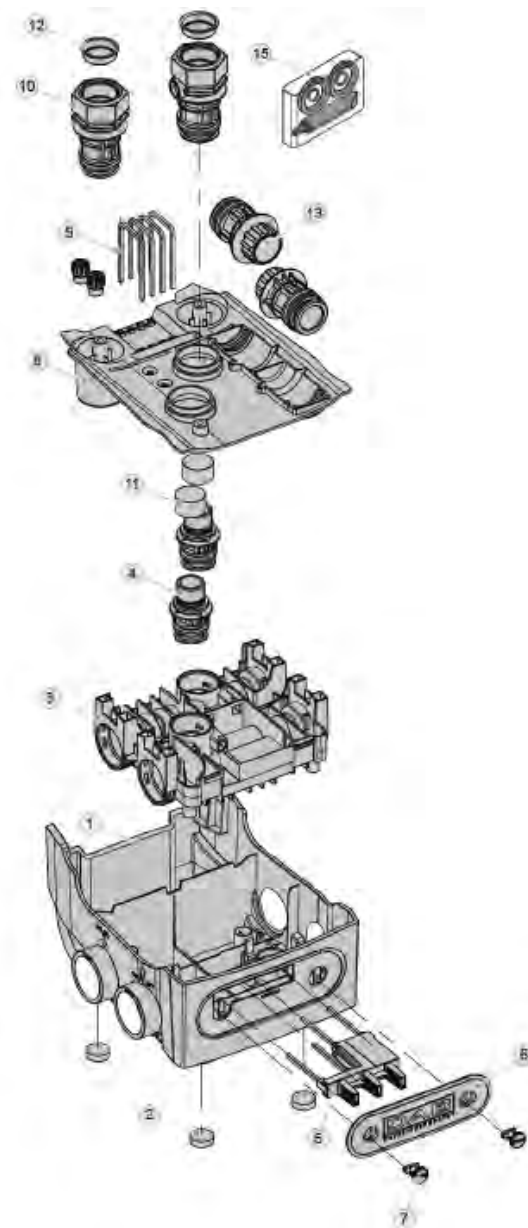
# E.SYDOCK – FAST CONNECTION TOOL KIT

Accessory kit for Quick Connection of the system. This is a quick coupling base on which to make the connections to the plant and from which the system can be simply connected or disconnected.

## Advantages:

- possibility of making up the plant on-site, testing it, but removing the actual system until the moment of delivery, avoiding possible damage
- it is easy for the assistance service to replace the system with a “spare” in the event of special maintenance

15	1	KIT O-RING FCT
14	2	PLUG 3/8 BLACK CROSS -PA66+30GF
13	2	CONNECTION CUP FITTING FCT
12	2	THREAD GUARD PLUG D.1 1/4
11	2	PLUG FOR PIPE 1
10	2	FCT EXTERNAL FITTING
9	4	CLIP - SQUARE SECT.4 - SPAN 41,5
8	1	FCT COVER
7	2	FCT LOGO PLATE STOPPER
6	1	FCT LOGO PLATE
5	1	FCT RETAINER DEVICE
4	2	FCT INTERNAL FITTING
3	1	FCT MANIFOLD
2	4	FCT RUBBER FOOT
1	1	FCT SUPPORT BASE
Index		Q.ty Description



# E.SYDOCK — CONNECTION FEATURES



4 Clammers: to fasten  
the union + side plugs



1 upper covers



2 adapters:  
to connect the e.sybox



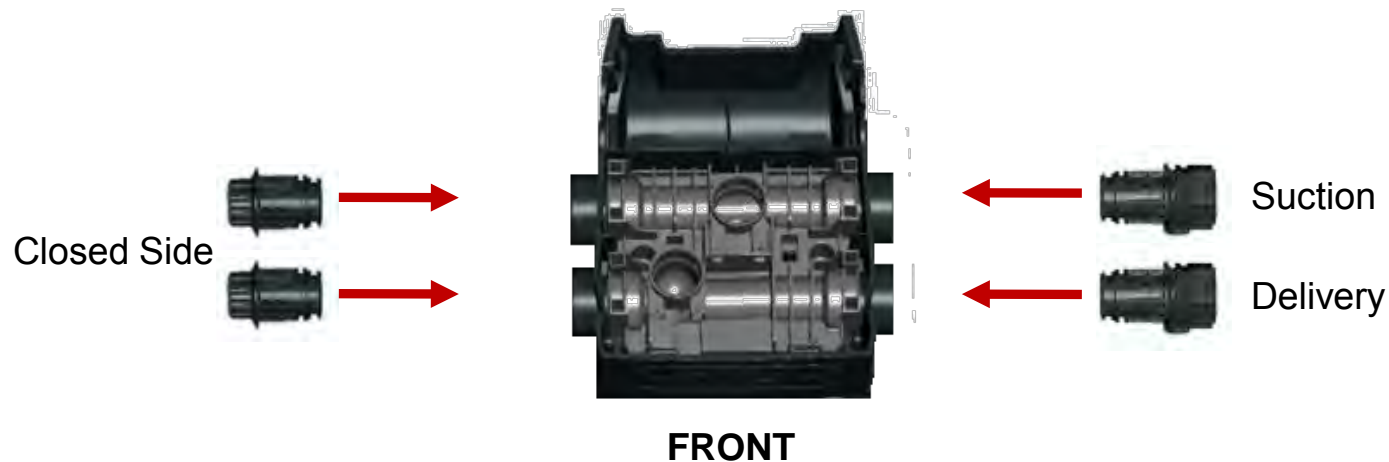
2 suction and delivery union



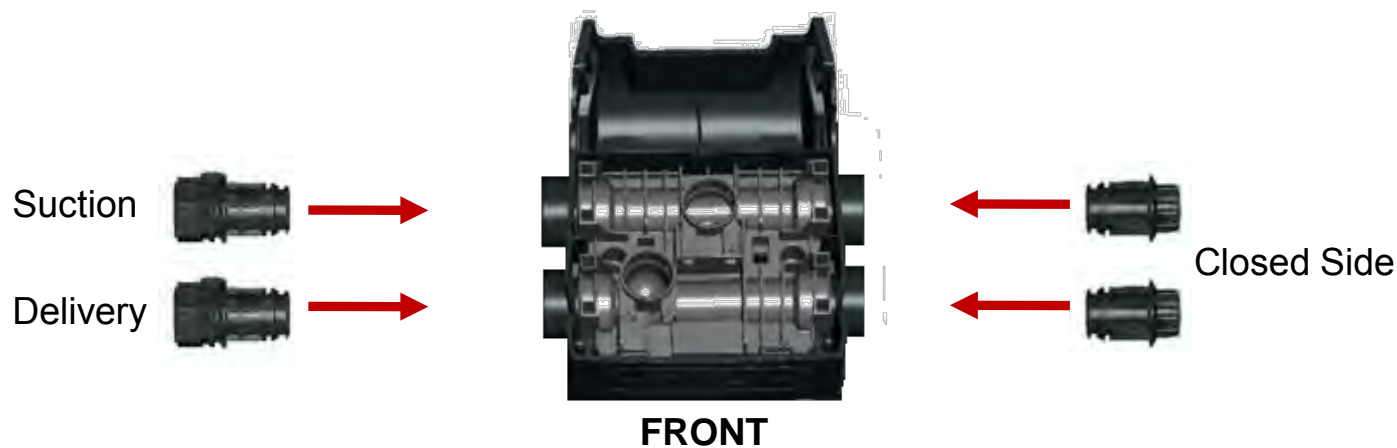
2 side plugs

# ***E.SYDOCK — SUCTION AND DELIVERY ON ONE SIDE***

## **Right Suction and Delivery**



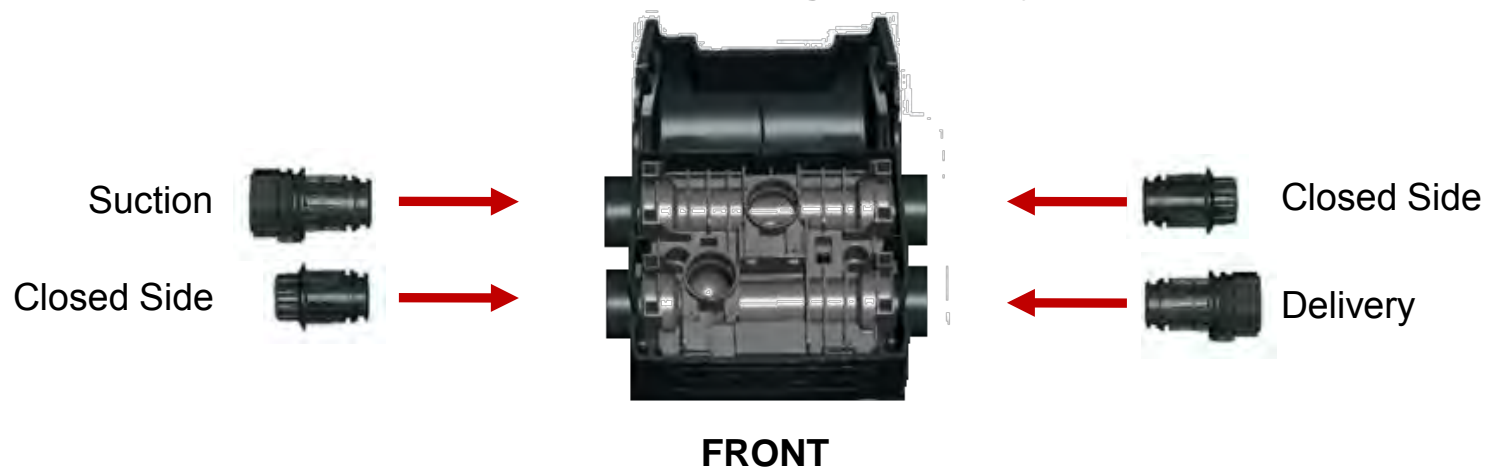
## **Left Suction and Delivery**





# ***E.SYDOCK — SUCTION AND DELIVERY IN LINE***

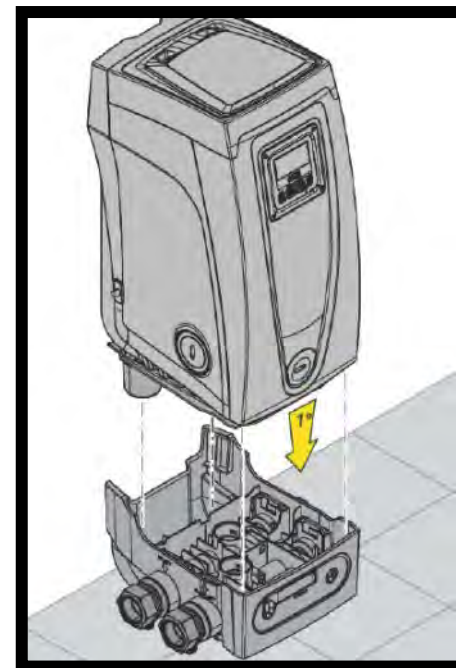
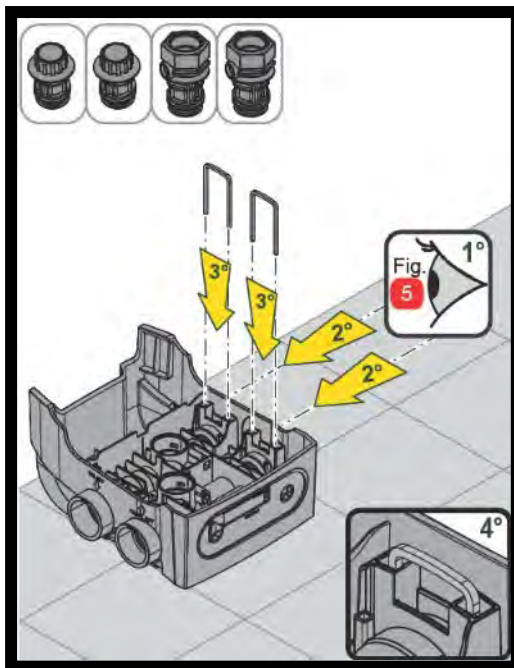
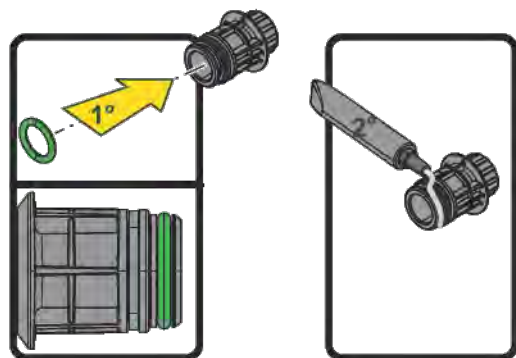
## **Left Suction, Right Delivery**



## **Right Suction, Left Delivery**



# E.SYDOCK — HYDRAULIC CONNECTION FIXING



## WARNING:

- *Use the quick guide during the installation*
- *Pay attention on the correct position of all o-rings*
- *Grease all o-rings before placing them*

## E.SYTWIN



## E.SYTWIN – BOOSTER SET



Pump set made up of two pumps whose deliveries all flow into a common manifold (pumps in parallel).

### ***Advantages:***

- Increasing hydraulic performance in comparison with a single device
- Ensuring continuity of operation in the event of a device developing a fault
- Sharing out the maximum power

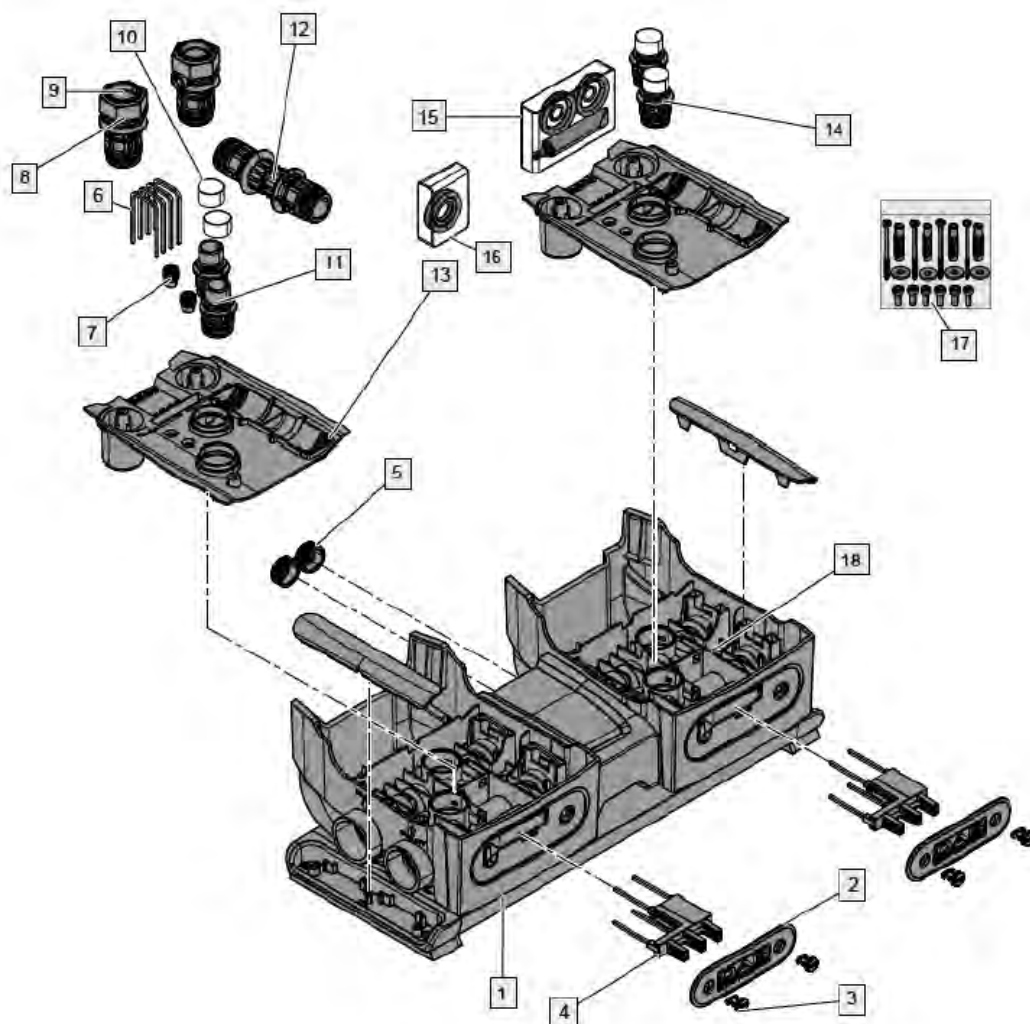
### ***Wireless communication:***

Modules communicate each other without any cable, just using the wireless connection unit placed on the inverter.





# E.SYTWIN – BOOSTER SET

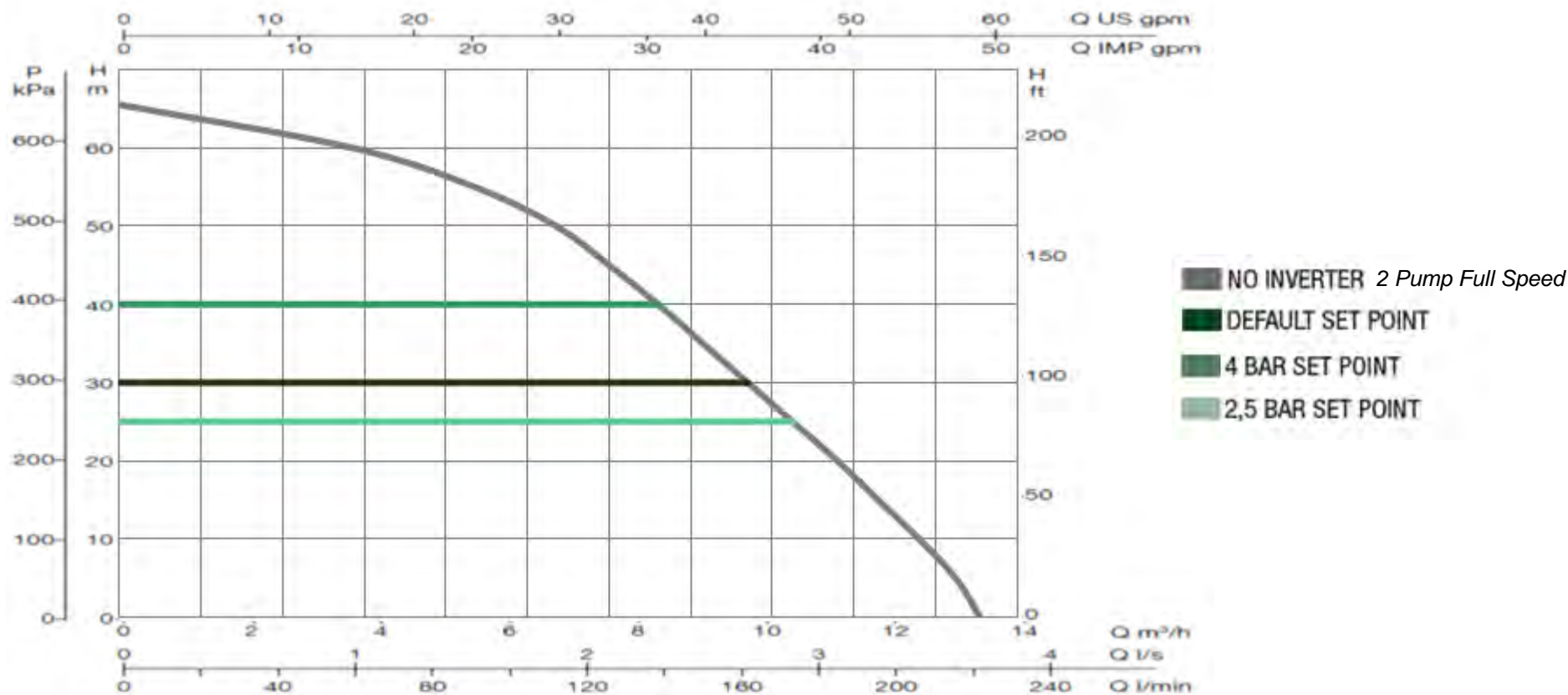


18	2	FCT MANIFOLD
17	1	KIT SCREWS
16	1	KIT O-RING TWIN
15	1	KIT O-RING FCT
14	4	FCT INTERNAL FITTING
13	2	FCT COVER
12	2	CONNECTION CUP FITTING FCT
11	4	O-RING 28.17X3.53 FKM70 GREEN
10	4	PLUG FOR PIPE 1
Index	Q.ty	Description

9	2	THREAD GUARD PLUG D.1 1/4
8	2	FCT EXTERNAL FITTING
7	2	PLUG 3/8 BLACK CROSS -PA66+30GF
6	8	CLIP - SQUARE SECT.4 - SPAN 41,5
5	2	CAP 1" BLACK WRAS
4	2	FCT RETAINER DEVICE
3	4	FCT LOGO PLATE STOPPER
2	2	FCT LOGO PLATE
1	1	BASE AND SUPPORT BASE TWIN E.SYBOX
Index	Q.ty	Description

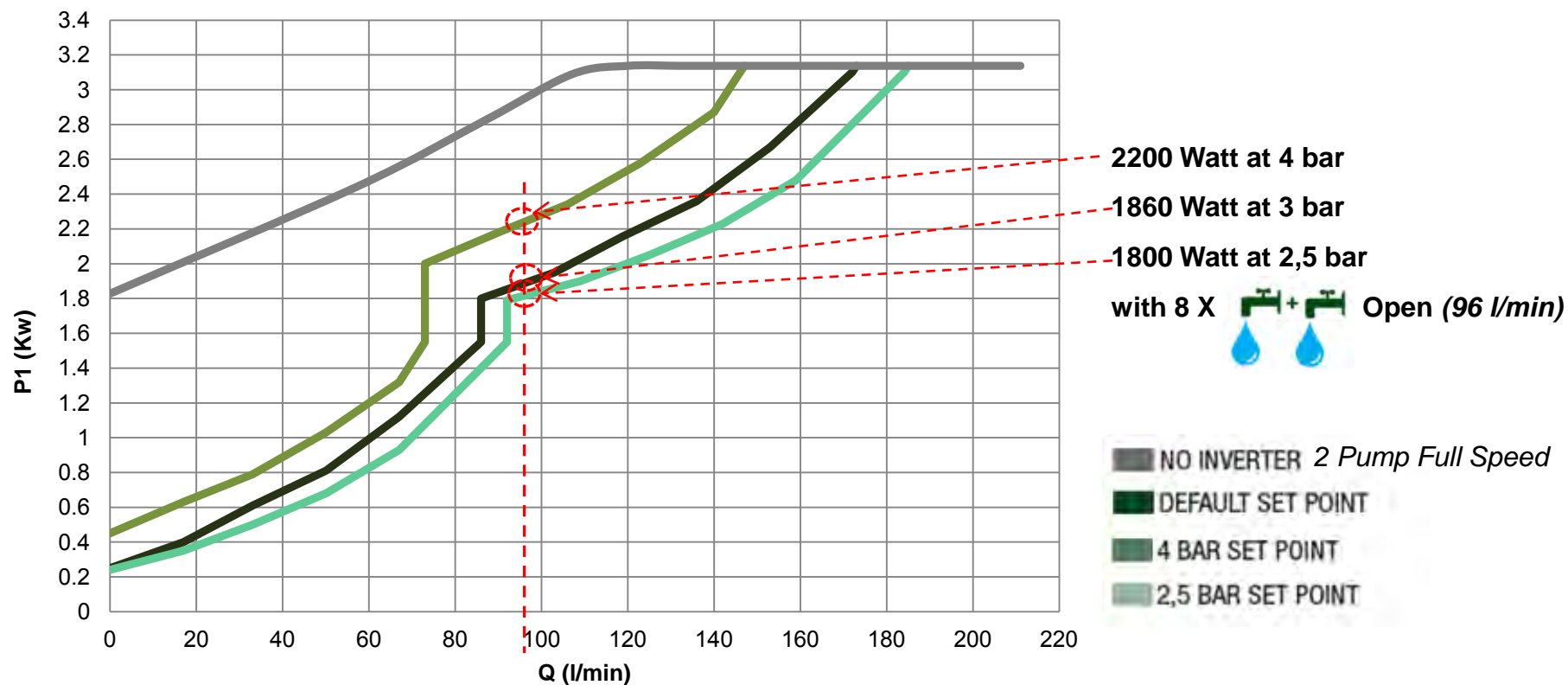


# E.SYTWIN – PERFORMANCE



Performance curves of the complete e.sytwin unit including all the connections  
(for vessel, heat sink, inverter controllers, check valve, flow and pressure sensors)

# E.SYTWIN – ENERGY SAVING



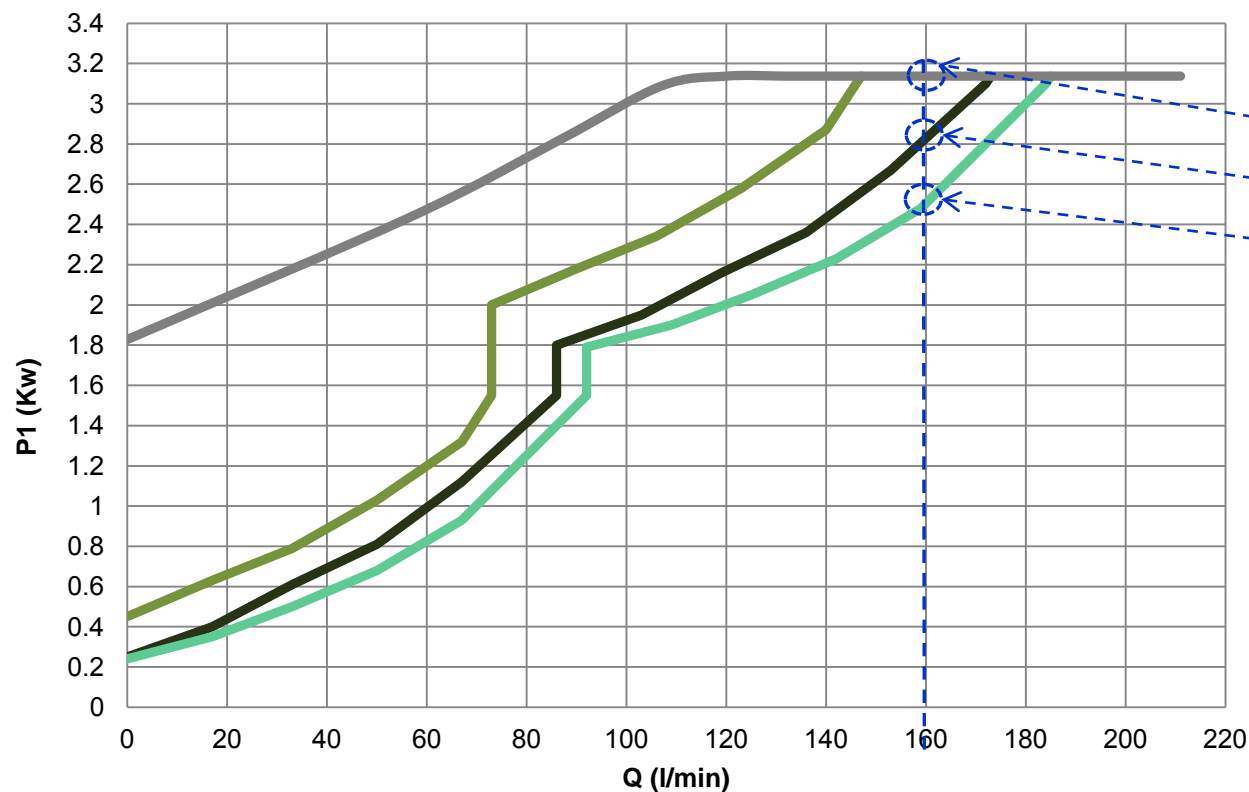
Thanks to the Inverter technology, e.sybox draws only the necessary energy according to water requirements, thereby avoiding wastes and allowing considerable economic savings.



ENERGY SAVING AREA



# E.SYTWIN – ENERGY SAVING



3190 Watt at 4 bar  
2800 Watt at 3 bar  
2440 Watt at 2,5 bar  
with 4 X



Open (160 l/min)

NO INVERTER 2 Pump Full Speed  
DEFAULT SET POINT  
4 BAR SET POINT  
2,5 BAR SET POINT

Thanks to the Inverter technology, e.sybox draws only the necessary energy according to water requirements, thereby avoiding wastes and allowing considerable economic savings.

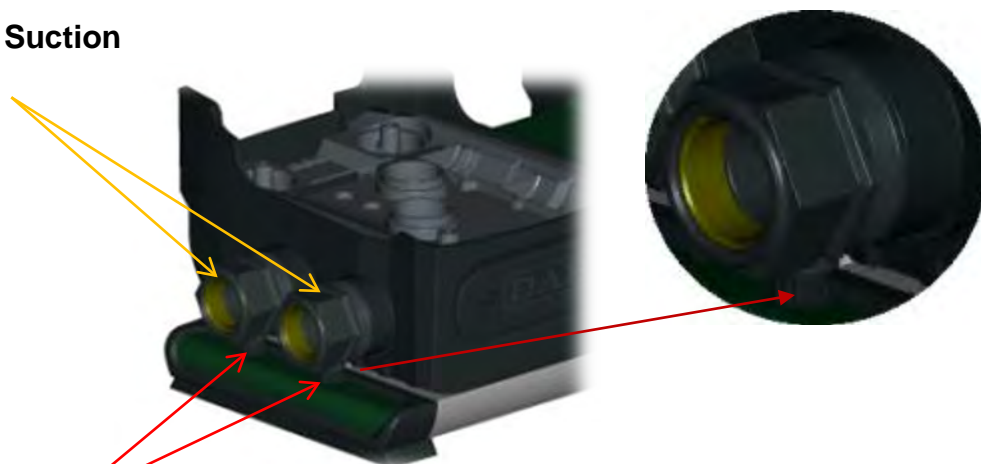


ENERGY SAVING AREA

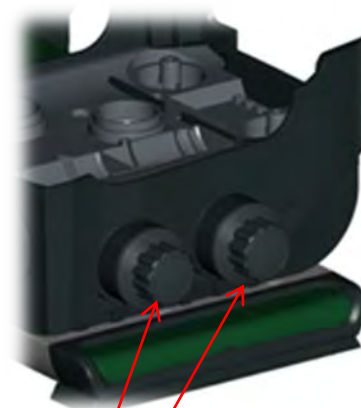
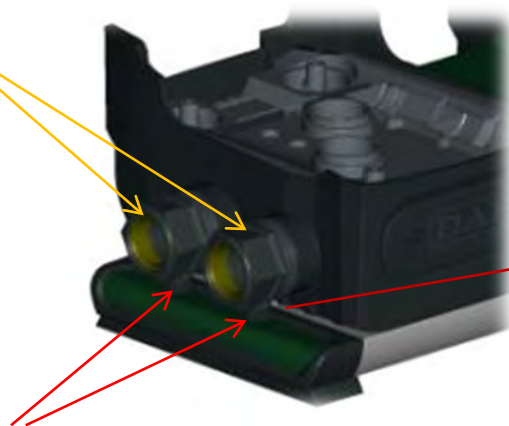


# E.SYTWIN – FEATURES

**Delivery & Suction  
Unions**



**Caps to discharge the system in case of  
maintenance/removal of the e.sybox**



**Side caps**



**Anti Vibration Feet**



**Ground Fixing System**

## E.SYTWIN – CONNECTION FEATURES



4 Clammers: to fasten  
the union + side plugs



4 Clammers: To fix  
the central junction.



2 upper covers



4 adapters: to  
connect 2 e.sybox



2 suction and delivery union



2 side plugs

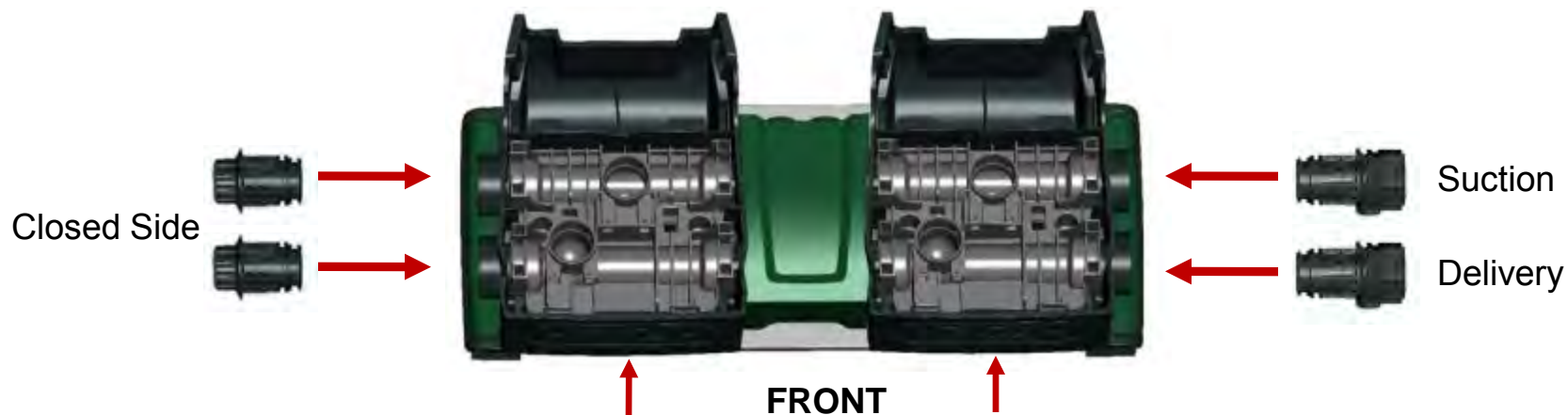


2 maintenance plugs: see  
next slide

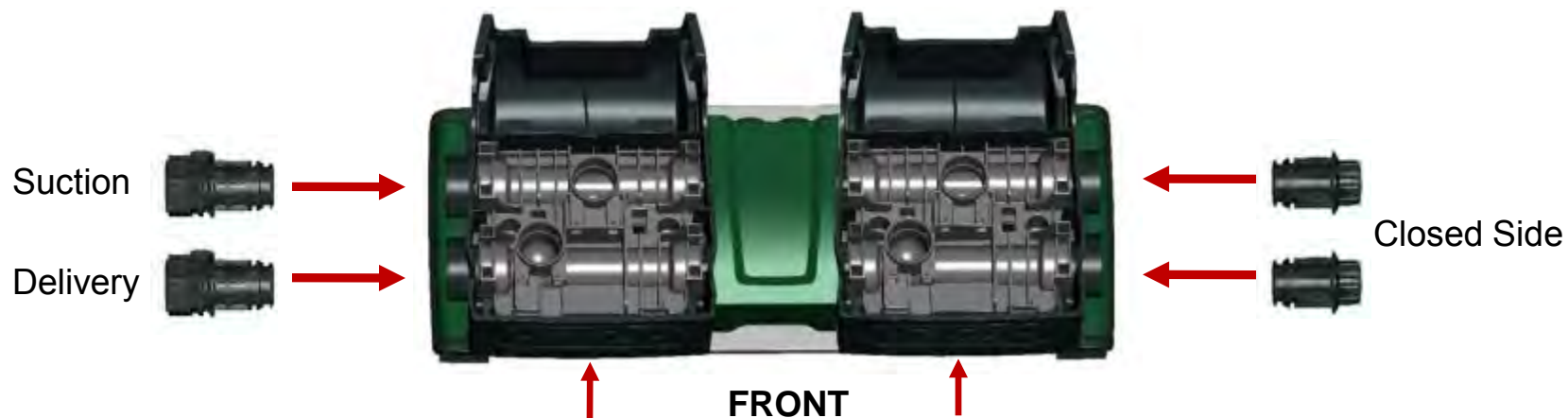


# ***E.SYTWIN – SUCTION AND DELIVERY ON ONE SIDE***

## **Right Suction and Delivery**

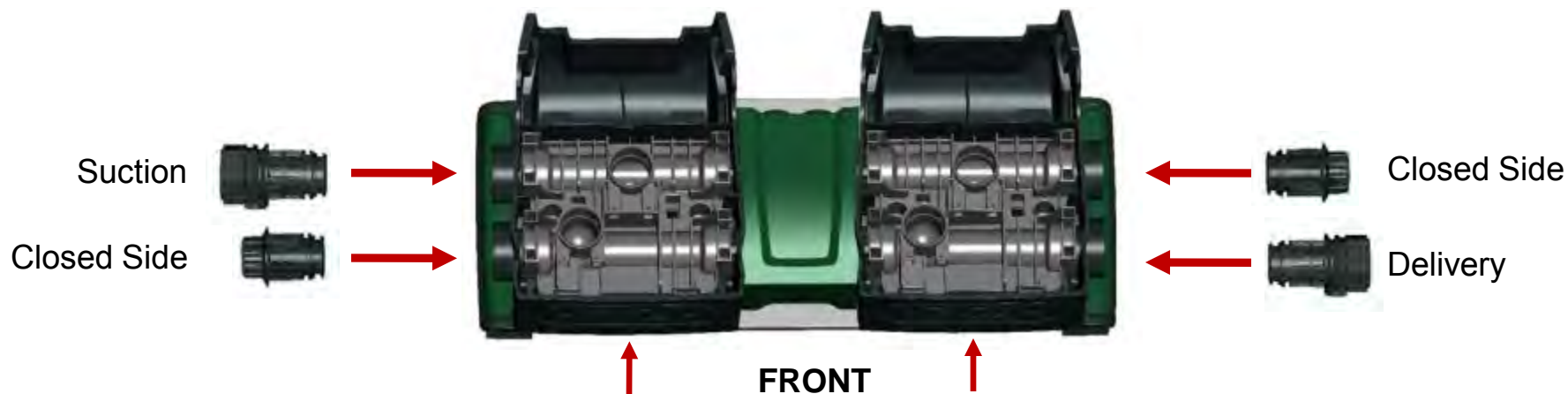


## **Left Suction and Delivery**

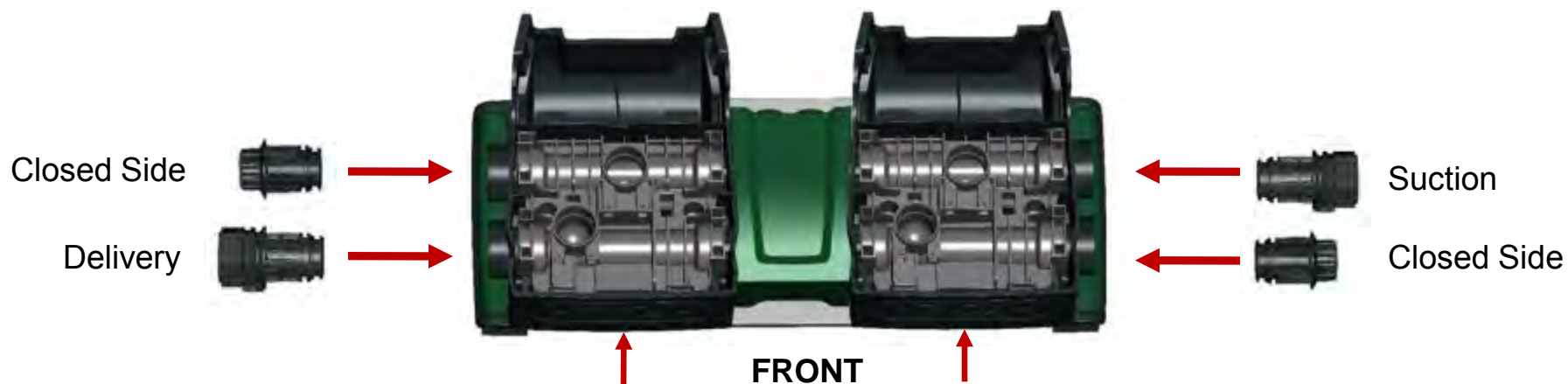


# ***E.SYTWIN – SUCTION AND DELIVERY IN LINE***

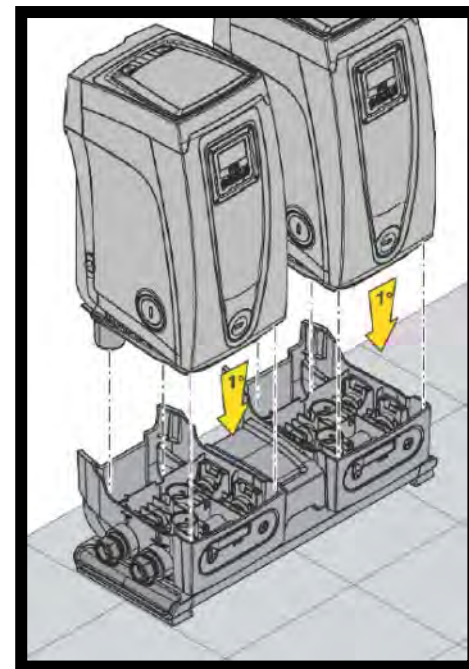
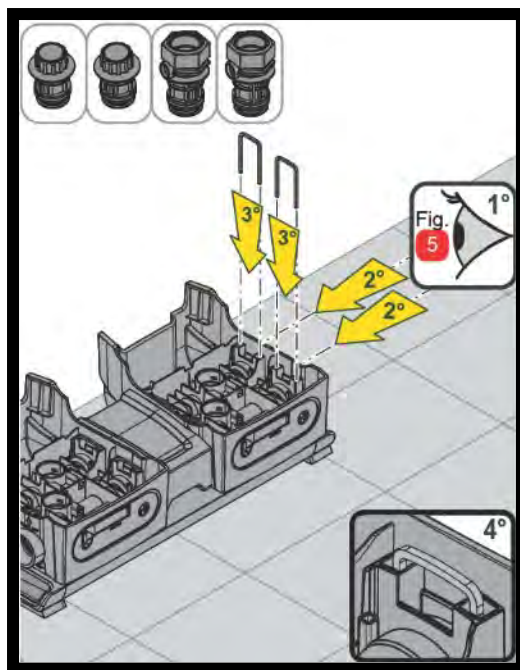
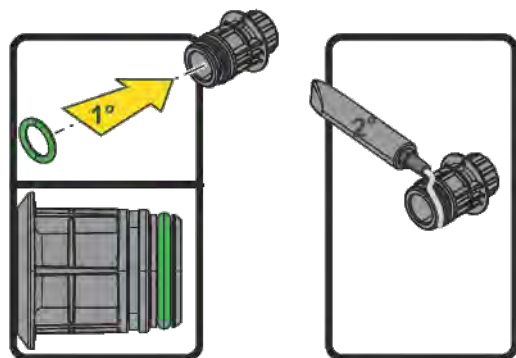
**Left Suction, Right Delivery**



**Right Suction, Left Delivery**



# E.SYTWIN — HYDRAULIC CONNECTION FIXING



## WARNING:

- *Use the quick guide during the installation*
- *Pay attention on the correct position of all o-rings*
- *Grease all o-rings before placing them*

# E.SYTWIN – WIRELESS CONNECTION



**NO CABLE INTERCONNECTION BETWEEN E.SYBOX**

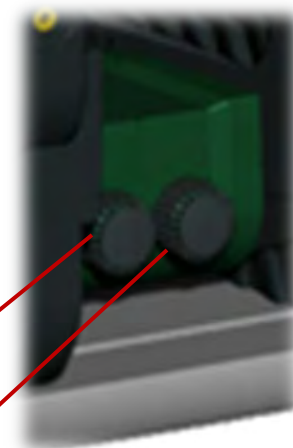


# E.SYTWIN – CONNECTION FEATURES

It's possible to disconnect one e.sybox ensuring the water supply thanks to the remaining e.sybox (left pic.).

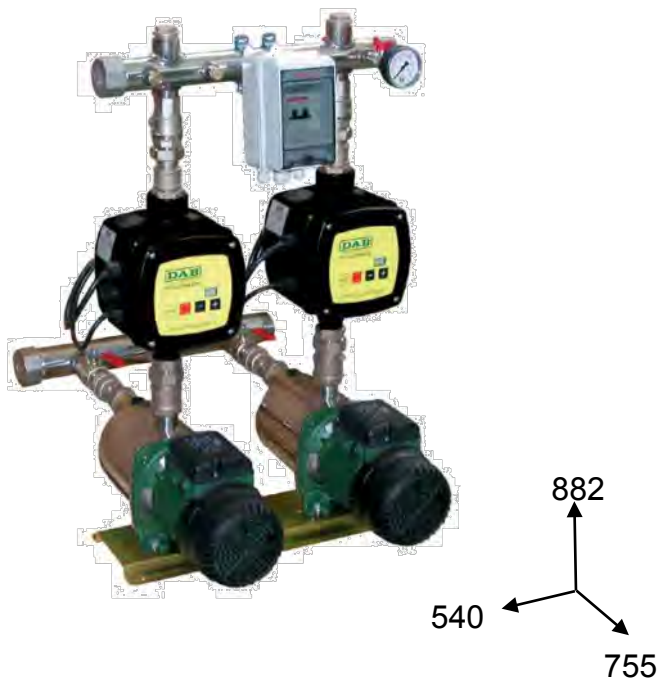


After disconnecting one unit, fix the adapters and the upper cover to the base. Then screw the 2 maintenance plugs to the adapters.





## E.SYTWIN – COMPACT



TOTAL VOLUME  $\approx 360 \text{ dm}^3$



Pressure vassel not included



TOTAL VOLUME  $\approx 190 \text{ dm}^3$

- 50% of occupied space

# E.SYBOX ACCESSORIES – CODE & DIMENSIONS

		Code	Dimensions [mm]	Dimensions with e.sybox [mm]
	E.SYWALL	60161442	185L x 25P x 144H	-
	E.SYDOCK	GAS – 60147247	293L x 318P x 180H	293L x 345P x 679H (with 1 e.sybox installed)
		NPT – 60150514		
	E.SYTWIN	GAS – 60160491	752L x 358P x 230H	752L x 358P x 730H (with 2 e.sybox installed)
		NPT – 60162081		

\* e.sybox not included (to order : cod. 60147200 )



**THANK YOU FOR YOUR ATTENTION**